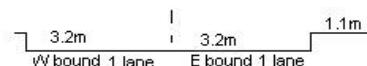


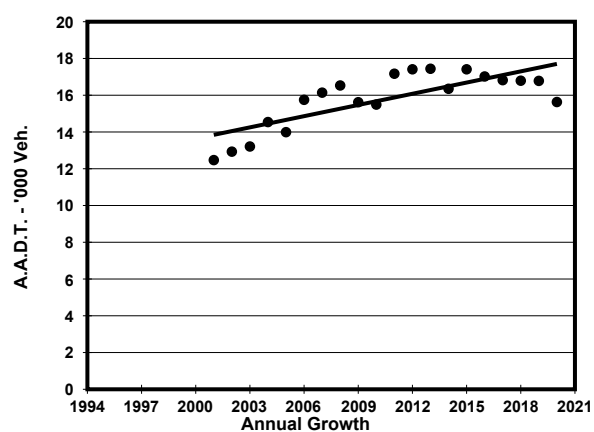
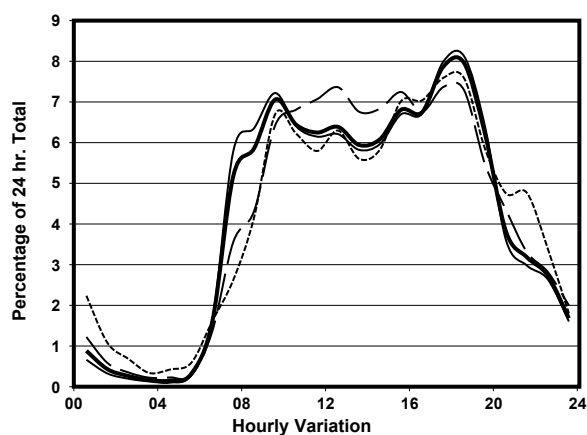
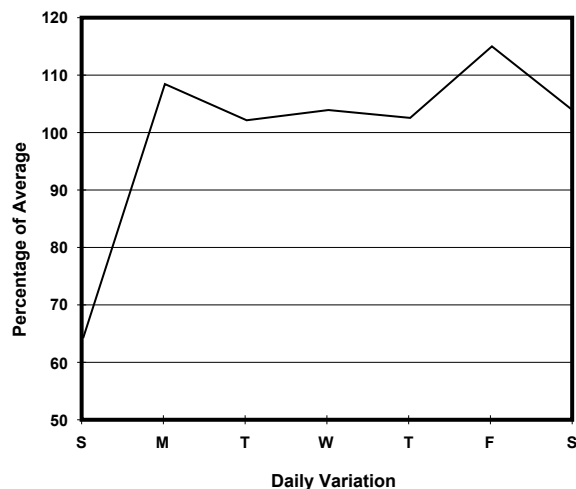
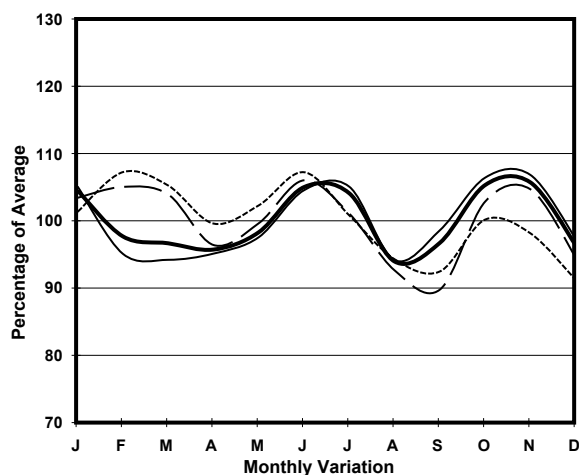
YEAR 2020

LINK MAGAZINE GAP RD (from GARDEN RD to PEAK RD)

COVERAGE (B) STATION 2205
ROAD NETWORK MAJOR
ROAD TYPE DISTRICT DISTRIBUTOR



1. TRAFFIC FLOW VARIATION AND GROWTH



— All day — Mon.- Fri. Sat. - - - - - Sun.

2. TRAFFIC CHARACTERISTICS (BY DIRECTION)

Parameter	All - Day	Mon. - Fri.	Sat.	Sun.
EAST BOUND				
A.A.D.T.	7940	8580	8460	5310
R 12 / 24 - %	77.2	77.7	77.4	71.9
R 16 / 24 - %	94	94.5	93.1	91
AM Peak Hour	0900-1000	0900-1000	0900-1000	0900-1000
One-way flow at AM peak hour	550	600	560	340
T - % (AM)	-	1.8	-	-
PM Peak Hour	1800-1900	1800-1900	1700-1800	1600-1700
One-way flow at PM peak hour	630	710	600	400
T - % (PM)	-	0.6	-	-
Prop.of commercial vehicles - 16 hr.	-	1.5	-	-
WEST BOUND				
A.A.D.T.	7690	8360	8110	4920
R 12 / 24 - %	80	81.2	78.2	73.1
R 16 / 24 - %	95.1	95.6	94.4	91.5
AM Peak Hour	0900-1000	0900-1000	0900-1000	0900-1000
One-way flow at AM peak hour	560	620	500	350
T - % (AM)	-	1.4	-	-
PM Peak Hour	1700-1800	1700-1800	1800-1900	1800-1900
One-way flow at PM peak hour	640	710	650	430
T - % (PM)	-	2.6	-	-
Prop.of commercial vehicles - 16 hr.	-	3.3	-	-

3. OTHER INFORMATION AND COMMENT

Coverage (B) Station 2205
Year 2020

4. Vehicle classification and occupancy - Monday to Friday

Time		Class of vehicle									
		Motor Cycle	Private Car	Taxi	Private LB	PLB	Goods veh.		Non Fr. Bus	Fr. Bus	
							Light	M & H		SD	DD
0700-0800	Pro	1.7	43.0	40.4	1.7	1.3	3.5	0.0	8.3	0.0	0.0
	Ocp	1.3	1.3	2.1	8.5	12.7	2.0	0.0	9.6	0.0	0.0
0800-0900	Pro	3.1	56.6	31.7	0.7	1.7	3.4	0.0	2.8	0.0	0.0
	Ocp	1.0	1.4	2.2	2.5	10.0	1.9	0.0	6.8	0.0	0.0
0900-1000	Pro	3.2	53.8	32.7	0.0	0.6	8.0	0.6	1.0	0.0	0.0
	Ocp	1.0	1.4	2.1	0.0	14.5	1.7	1.5	5.0	0.0	0.0
1000-1100	Pro	0.7	62.3	23.1	0.4	1.1	11.4	0.0	1.1	0.0	0.0
	Ocp	1.0	1.5	1.9	9.0	7.0	1.5	0.0	3.0	0.0	0.0
1100-1200	Pro	0.4	64.8	19.9	0.0	0.8	13.3	0.0	0.8	0.0	0.0
	Ocp	1.0	1.6	2.0	0.0	13.0	1.6	0.0	4.5	0.0	0.0
1200-1300	Pro	2.0	64.2	19.3	0.8	0.8	10.6	0.8	1.6	0.0	0.0
	Ocp	1.0	1.5	2.0	6.5	12.5	1.6	1.0	4.3	0.0	0.0
1300-1400	Pro	0.9	62.9	22.7	0.9	1.3	7.9	0.4	3.1	0.0	0.0
	Ocp	1.0	1.5	1.8	7.0	15.3	1.4	2.0	17.6	0.0	0.0
1400-1500	Pro	1.5	65.9	19.3	0.4	1.1	8.7	0.0	3.0	0.0	0.0
	Ocp	1.0	1.6	2.4	2.0	13.0	1.3	0.0	3.8	0.0	0.0
1500-1600	Pro	4.0	62.4	18.6	0.7	1.5	8.0	0.0	4.7	0.0	0.0
	Ocp	1.0	1.5	2.1	6.0	11.3	1.7	0.0	13.9	0.0	0.0
1600-1700	Pro	1.0	65.0	22.1	1.0	1.3	6.9	0.3	2.3	0.0	0.0
	Ocp	1.0	1.5	2.4	2.0	12.3	1.7	2.0	10.6	0.0	0.0
1700-1800	Pro	3.1	60.0	29.5	0.3	0.7	4.4	0.0	2.0	0.0	0.0
	Ocp	1.0	1.5	2.9	1.0	19.0	2.4	0.0	7.0	0.0	0.0
1800-1900 Peak hour	Pro	1.9	74.0	20.7	0.0	0.9	1.9	0.0	0.6	0.0	0.0
	Ocp	1.0	1.6	2.3	0.0	18.0	1.3	0.0	17.5	0.0	0.0
1900-2000	Pro	0.8	75.8	18.9	0.4	1.2	1.6	0.0	1.2	0.0	0.0
	Ocp	1.0	1.4	2.3	3.0	17.3	1.5	0.0	13.7	0.0	0.0
2000-2100	Pro	4.0	56.0	36.0	0.0	1.6	0.8	0.0	1.6	0.0	0.0
	Ocp	1.0	1.5	2.0	0.0	11.0	1.0	0.0	11.0	0.0	0.0
2100-2200	Pro	3.5	54.0	39.8	0.0	1.8	0.9	0.0	0.0	0.0	0.0
	Ocp	1.0	1.6	1.8	0.0	6.0	1.0	0.0	0.0	0.0	0.0
2200-2300	Pro	1.9	53.3	43.0	0.0	1.9	0.0	0.0	0.0	0.0	0.0
	Ocp	1.0	1.5	1.9	0.0	10.5	0.0	0.0	0.0	0.0	0.0
16 hours	Pro	2.0	61.8	25.9	0.5	1.2	6.3	0.2	2.2	0.0	0.0
	Ocp	1.0	1.5	2.2	5.2	12.6	1.6	1.5	9.6	0.0	0.0

Legend: Pro. Proportion of vehicles in % (Sum may not add up to 100% due to figure rounding)*

Ocp. Average occupancy of vehicles including both driver and passengers*

M&H Medium and Heavy

* All traffic data are collected from combined bounds